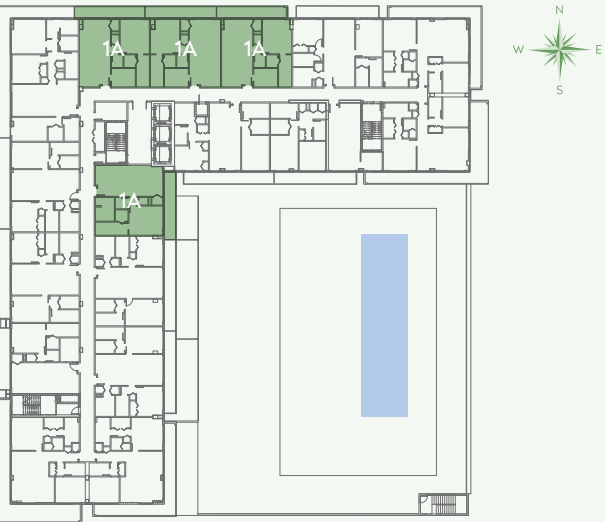


# RESIDENCE 1A

1 BEDROOM, 2 BATH PLUS DEN  
FLOORS 5 - 12

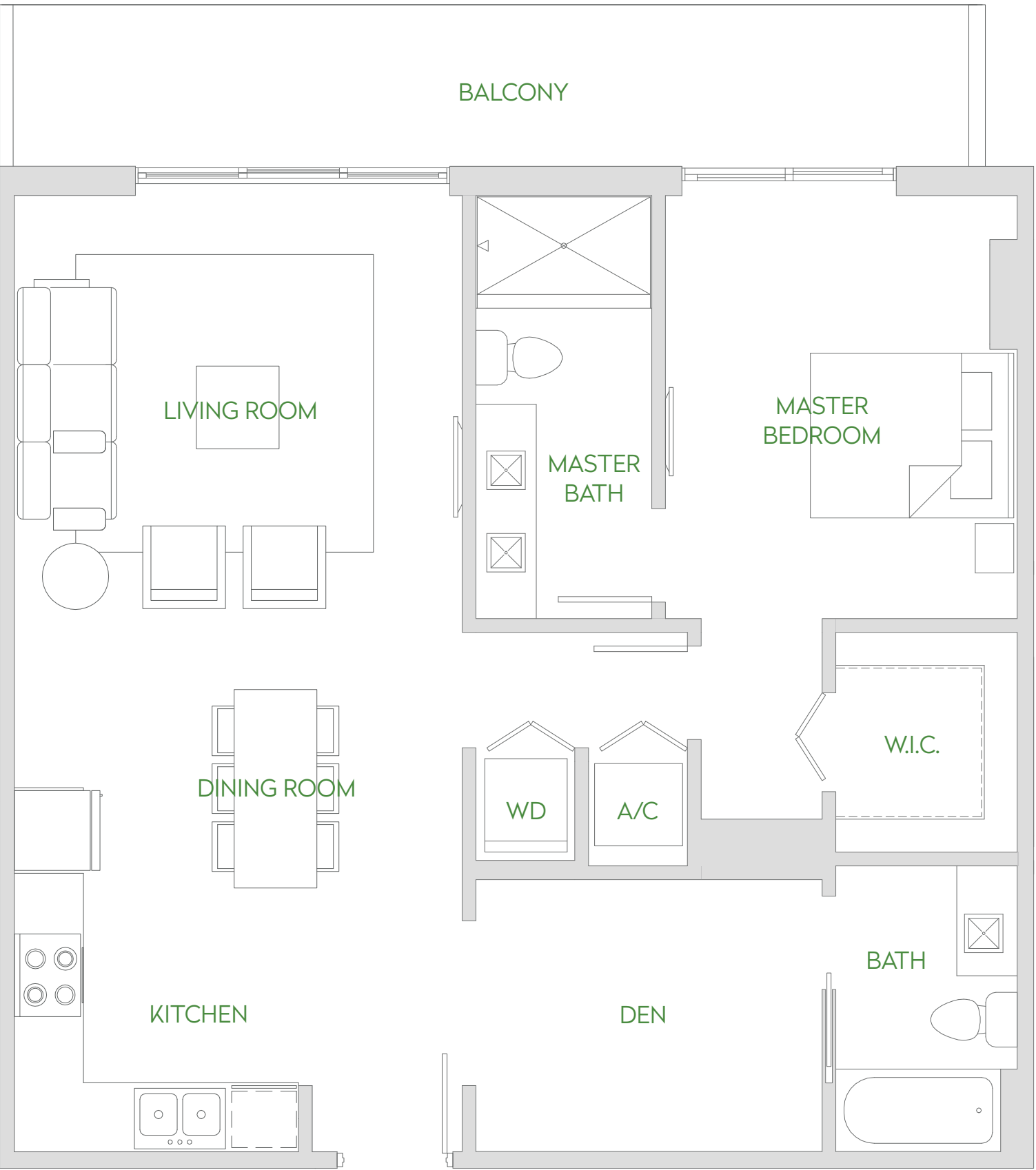
	TOTAL SQ FT	TOTAL SQ M
RESIDENCE	928	86.2
BALCONY	138-513	12.8-47.7
TOTAL	1,066-1,441*	99-133.9*



Key Plan of floors 9 & 10.

### FEATURES

- ◆ Expansive Private Balconies
- ◆ Floor-to-Ceiling Windows
- ◆ High Ceilings
- ◆ Finer Finishings Program
  - ◆ European Style Cabinetry Color Options
  - ◆ Countertop Color Options
  - ◆ Floor Covering Color Options
- ◆ Faucets, fixtures and lavatories



\*Stated square footages and dimensions of units are based on measurements to the exterior boundaries of the exterior walls and the centerline of interior demising walls between units and will vary from the square footages and dimensions of the unit that would be determined by using the description and definition of the "Unit" set forth in the Declaration (which generally only includes the interior airspace between the perimeter walls and excludes interior structural components and other common elements). This method of measurement is generally used in sales and marketing materials and is provided to allow a prospective buyer to compare the Units with units in other condominium projects that utilize the same method. For your reference, the square footage of the Unit, determined in accordance with the definition of the "Unit" set forth in the Declaration, is + or - 1,066-1,441 sq. ft. for unit type 1A. Terraces, patios and balconies are not part of the "Unit". Measurements and dimensions of rooms set forth on this floor plan are generally taken at the farthest points of each given room (as if the room were a perfect rectangle), without regard for any cutouts, soffits or other variations. Accordingly, the square footage of the actual room will typically be smaller than the product obtained by multiplying the stated length times width. All square footages, dimensions and measurements are estimates which are based on preliminary plans and will vary with actual construction. All floor plans, specifications and other development plans are proposed and conceptual only, and are subject to change and will not necessarily accurately reflect the final plans and specifications.