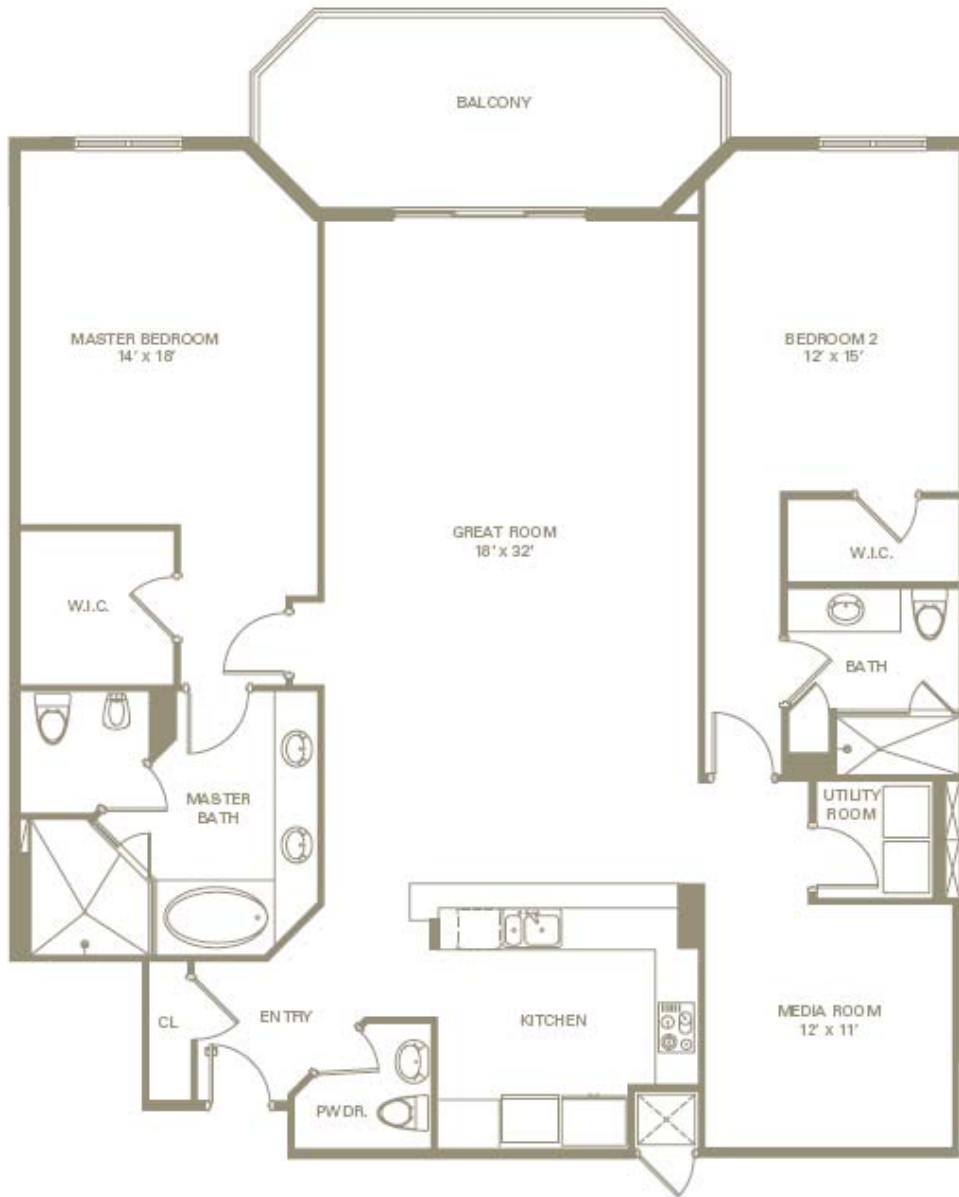
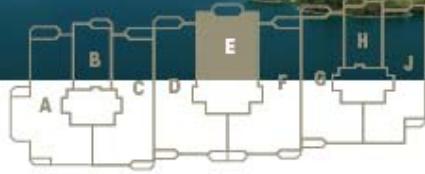




2 BEDROOMS, 2.5 BATHS + MEDIA ROOM



All measurements, dimensions, sizes and wall angles are approximate. The unit square footage labeled as "Under A/C" is based on unit boundaries as defined in the condominium declaration.

ORAL REPRESENTATIONS CANNOT BE RELIED UPON AS CORRECTLY STATING REPRESENTATIONS OF THE DEVELOPER. FOR CORRECT REPRESENTATIONS, MAKE REFERENCE TO THIS BROCHURE AND TO THE DOCUMENTS REQUIRED BY SECTION 718.508, FLORIDA STATUTES, TO BE FURNISHED BY A DEVELOPER TO A BUYER OR LESSEE.