

CONRAD®

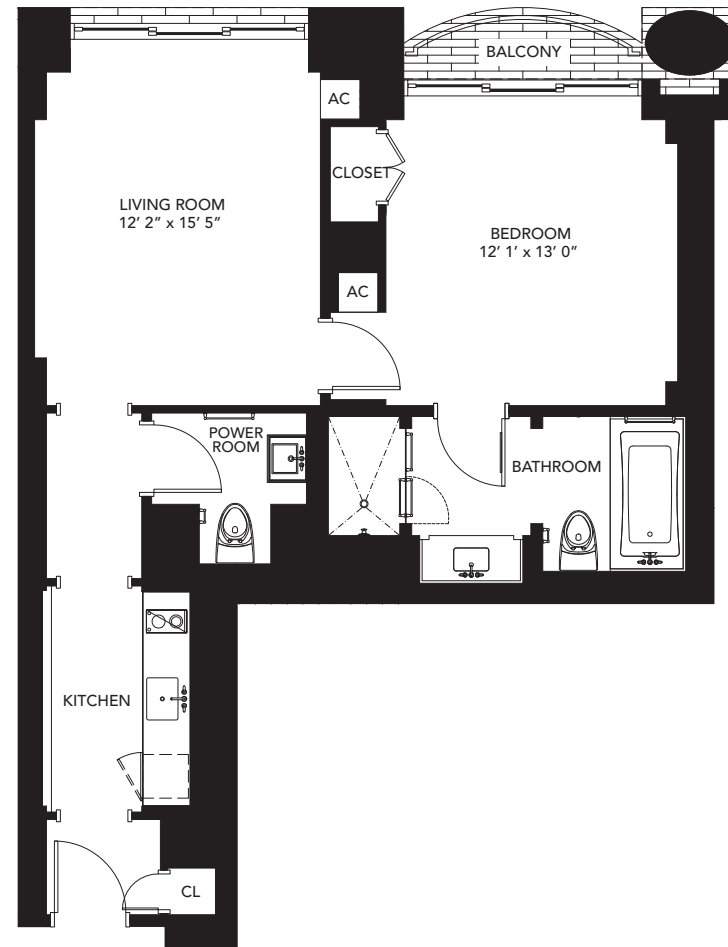
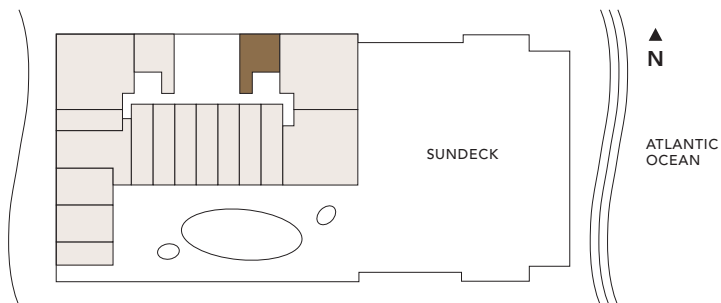
FORT LAUDERDALE

Beach Residences

E 1 BED / 1.5 BATH

Floors 6-20

RESIDENCE	753 sq. ft.	69.95 m ²
BALCONY	19 sq. ft.	1.76 m ²
<hr/>		
TOTAL	772 sq. ft.	71.71 m ²



MEASUREMENTS AND AREAS DEPICTED HEREON ARE BASED ON ARCHITECTURAL MEASURING TECHNIQUES, WHICH VARY FROM ACTUAL CONDOMINIUM UNIT BOUNDARIES. TYPICALLY, APARTMENTS ARE MEASURED TO THE EXTERIOR BOUNDARIES OF THE EXTERIOR WALLS AND TO THE CENTERLINE OF INTERIOR DEMISING WALLS OR TO THE EXTERIOR OF WALLS ADJOINING CORRIDORS WITHOUT EXCLUDING AREAS THAT MAY BE OCCUPIED BY COLUMNS OR OTHER STRUCTURAL COMPONENTS (THE "TYPICAL MEASUREMENT"). ACTUAL UNIT BOUNDARIES OF THE CONDOMINIUM UNIT WILL RESULT IN UNIT BEING SMALLER THAN IF STANDARD ARCHITECTURAL MEASURING TECHNIQUES WERE USED. AS SUCH, THE TYPICAL MEASUREMENT AND SQUARE FOOTAGE REFLECTED HEREON IS GREATER THAN THE ACTUAL UNIT AREA, AND INCLUDES MANY SHARED COMPONENTS AS FURTHER DEFINED IN THE CONDOMINIUM DOCUMENTS. REFER TO THE DECLARATION OF CONDOMINIUM AND EXHIBITS THERETO FOR PRECISE UNIT BOUNDARIES.

CONRAD® IS A REGISTERED TRADEMARK OF HLT CONRAD IP LLC, AN AFFILIATE OF HILTON WORLDWIDE INC. ("HILTON"). THE RESIDENCES ARE NOT OWNED, DEVELOPED, OR SOLD BY HILTON AND HILTON DOES NOT MAKE ANY REPRESENTATIONS, WARRANTIES OR GUARANTIES WHATSOEVER WITH RESPECT TO THE RESIDENCES. THE DEVELOPER USES THE CONRAD® BRAND NAME AND CERTAIN CONRAD TRADEMARKS (THE "TRADEMARKS") UNDER A LIMITED, NON-EXCLUSIVE, NON-TRANSFERABLE LICENSE FROM HILTON. THE LICENSE MAY BE TERMINATED OR MAY EXPIRE WITHOUT RENEWAL, IN WHICH CASE THE RESIDENCES WILL NOT BE IDENTIFIED AS A CONRAD BRANDED PROJECT OR HAVE ANY RIGHTS TO USE THE TRADEMARKS.

SALES & MARKETING BY
ONEWORLD
PROPERTIES