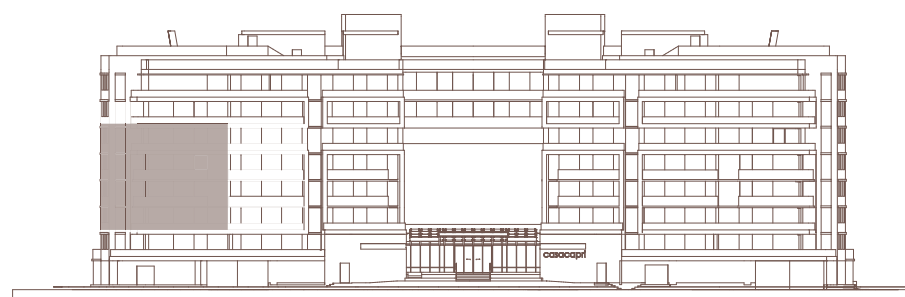
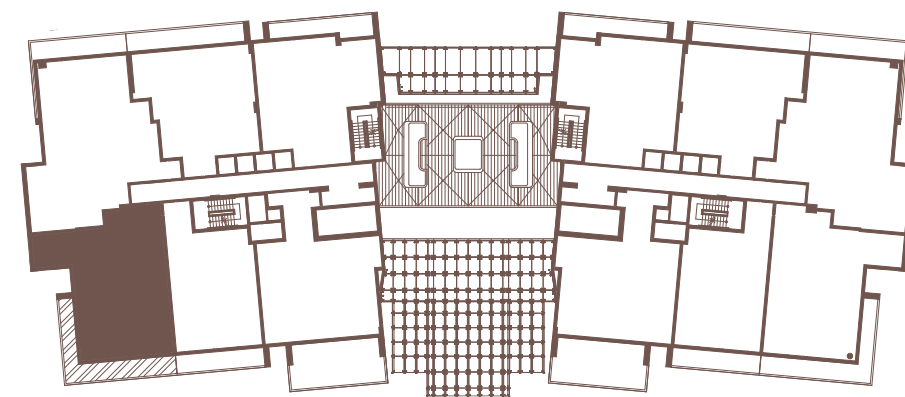


CASA *Capri* BY 100% *Capri*

Residence
312 to 712
B-North

2 BEDROOMS / 2.5 BATHROOMS
1,437 SQ. FT. (133 SQ. M.) INTERIOR
224 SQ. FT. (26 SQ. M.) EXTERIOR
1,661 SQ. FT. (159 SQ. M.) TOTAL



PARK



ORAL REPRESENTATIONS CANNOT BE RELIED UPON AS CORRECTLY STATING REPRESENTATIONS OF THE DEVELOPER. FOR CORRECT REPRESENTATIONS, MAKE REFERENCE TO THIS BROCHURE AND TO THE DOCUMENTS REQUIRED BY SECTION 718.503, FLORIDA STATUTES, TO BE FURNISHED BY A DEVELOPER TO A BUYER OR LESSEE.

WE ARE PLEDGED TO THE LETTER AND SPIRIT OF THE U.S. POLICY FOR ACHIEVEMENT OF EQUAL HOUSING OPPORTUNITY THROUGHOUT THE NATION. WE ENCOURAGE AND SUPPORT AN AFFIRMATIVE SALES, RENTAL, ADVERTISING OR MARKETING PROGRAM IN WHICH THERE ARE NO BARRIERS TO OBTAINING HOUSING BECAUSE OF RACE, COLOR, RELIGION, SEX, HANDICAP, FAMILIAL STATUS OR NATIONAL ORIGIN.

OBTAIN A PROPERTY REPORT OR ITS EQUIVALENT REQUIRED BY FEDERAL AND STATE LAW AND READ IT BEFORE SIGNING ANYTHING. NO FEDERAL OR STATE AGENCY HAS JUDGED THE MERITS OR VALUE, IF ANY, OF THIS OFFERING.

THIS IS NOT AN OFFERING IN ANY STATE WHERE PROHIBITED BY LAW. ALL RENDERINGS, PHOTOGRAPHY, FLOOR PLANS AND MAPS ARE ARTISTS CONCEPTIONS AND ARE NOT INTENDED TO BE AN EXACT DEPICTION OF THE BUILDING, WALKS, DRIVEWAYS, OR LANDSCAPING AND ARE NOT NECESSARILY TO SCALE. ALL SQUARE FOOTAGE ARE APPROXIMATE. THE DEVELOPER MAKES NO WARRANTY OR REPRESENTATION, EXPRESSED OR IMPLIED, OF THE ACCURACY OR COMPLETENESS OF THE INFORMATION CONTAINED WITHIN THIS BROCHURE. ALL ITEMS WITHIN THIS BROCHURE, BUT NOT LIMITED TO RENDERINGS, FLOOR PLANS, HOME SITES, FEATURES AND AMENITIES, ARE SUBJECT TO CHANGE WITHOUT NOTICE.