

# one park grove



biscayne bay

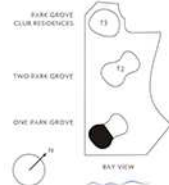
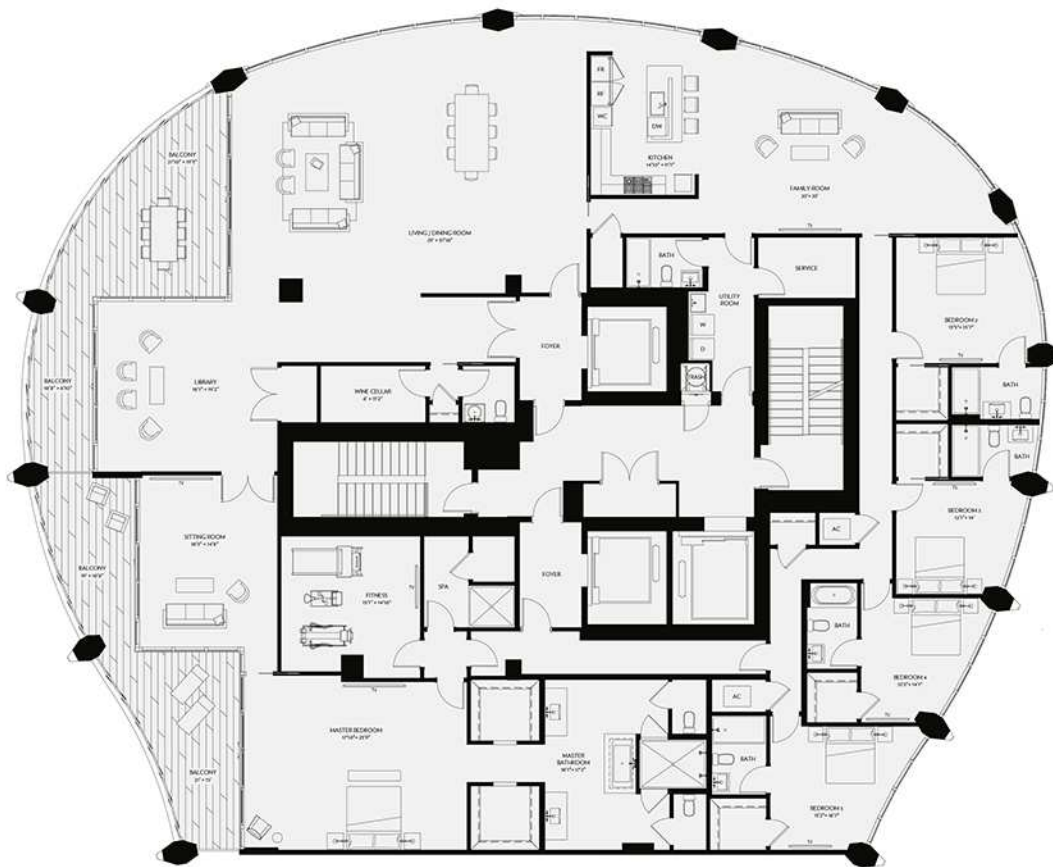
## residence pha levels lph, ph

7,311 sq ft / 658 sq m total

5 bedrooms  
6 bathrooms  
1 powder room

6,476 sq ft / 602 sq m interior  
835 sq ft / 56 sq m exterior

- 12 foot floor-to-ceiling glass overlooking Biscayne Bay
- Private oversized waterfront terraces
- Expansive dining and entertaining area
- Private master bedroom with walk-in closets
- Double size shower in master bedroom
- His & Her water closets
- His & Her vanities
- Bedrooms with ensuite bathrooms
- Eat-in chef's kitchen with Island, Wolf and SubZero appliances
- Staff Room with en suite bath
- Kitchens and baths designed by William Sofield



coconut grove



Overall square footage and dimensions are measured to the exterior boundaries of the exterior walls and the projection of floor slabs, including a 1/2" air gap from the square footage and dimensions that would be determined by using the description and definition of the "Unit" set forth in the Declaration (which generally includes the interior volume between the perimeter walls and includes all measured components and other components). This method of general use of area measurement is provided for purposes to compare the Unit with units of other developments in projects that utilize the same method. Measurements of rooms are based on the floor plan as generally shown on the floor plan of each apartment (or the room) and a partial rectangular surface used for any utility or storage. Accordingly, the area of the exterior wall is typically less than the area of the interior wall. All dimensions are approximate and all floor plans, including the development plan, are subject to change and are not intended to be used for construction purposes. See Declaration Page.

Terra RELATED



PARK GROVE

ONE - 1000 BAYVIEW - COCONUT GROVE BEACH