

# one park grove



biscayne bay

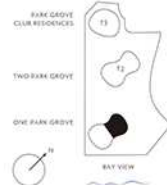
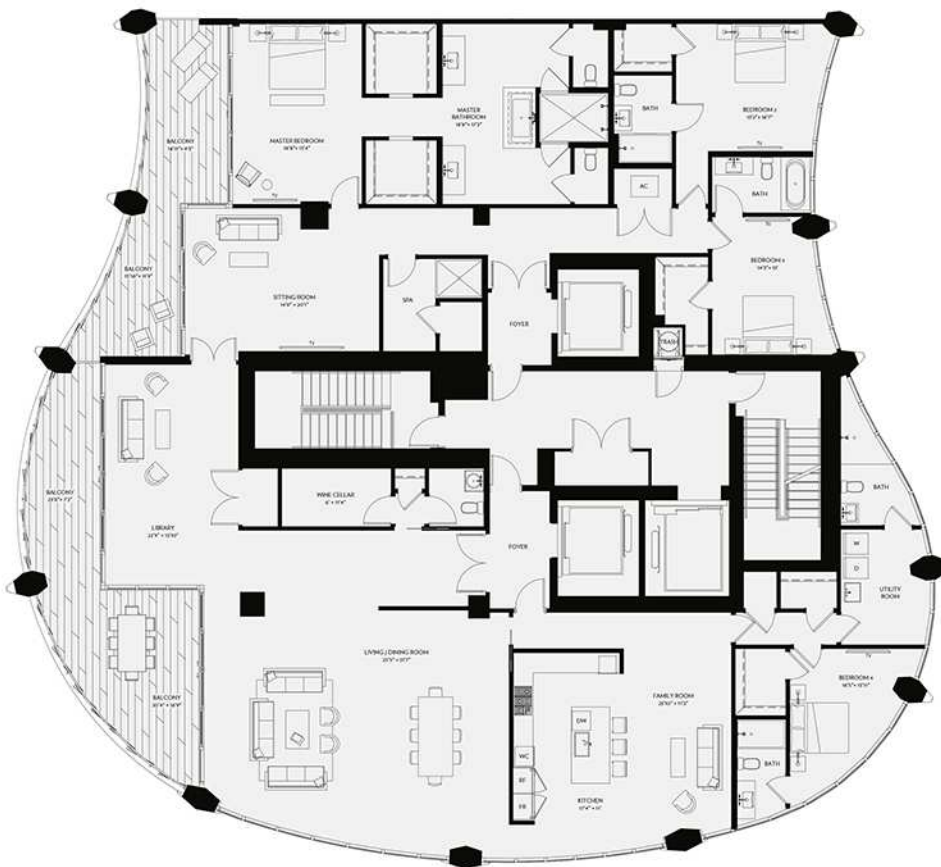
## residence phb levels lph, ph

5,902 sq ft / 548 sq m total

4 bedrooms  
5 bathrooms  
1 powder room

5,149 sq ft / 478 sq m interior  
753 sq ft / 70 sq m exterior

- 12 foot floor-to-ceiling glass overlooking Biscayne Bay
- Private oversized waterfront terraces
- Expansive dining and entertaining area
- Private master bedroom with walk-in closets
- Double size shower in master bedroom
- His & Her water closets
- His & Her vanities
- Bedrooms with ensuite bathrooms
- Eat-in chef's kitchen with Island, Wolf and SubZero appliances
- Staff Room with en suite bath
- Kitchens and baths designed by William Sofield



coconut grove



Overall square footages and dimensions are measured to the exterior boundaries of the exterior walls and the perimeter of exterior balconies, walkways and patios. All measurements are determined by using the description and definition of the "Unit" set forth in the Declaration of Condominium Ownership. The actual square footages and dimensions may vary slightly from those shown on this plan. The actual square footages and dimensions may vary slightly from those shown on this plan. The actual square footages and dimensions may vary slightly from those shown on this plan. The actual square footages and dimensions may vary slightly from those shown on this plan.

Terra RELATED



PARK GROVE

ONE - 5000 BAYVIEW - COCONUT GROVE BEACH