

No. 501

3,926 SQ FT INTERIOR | 2,288 SQ FT BALCONY
4 BEDROOMS | 4 BATHS
EAST, WEST AND NORTH EXPOSURE

Residence Features

Half floor residence with ocean views
Expansive Roman travertine wrapped terrace Brazilian ipe decks
Direct elevator entry

Gourmet Poliform kitchen with Gaggenau appliances

Master bedroom suite with terrace
Gracious master bathroom with dual showers and water closets

Amenities

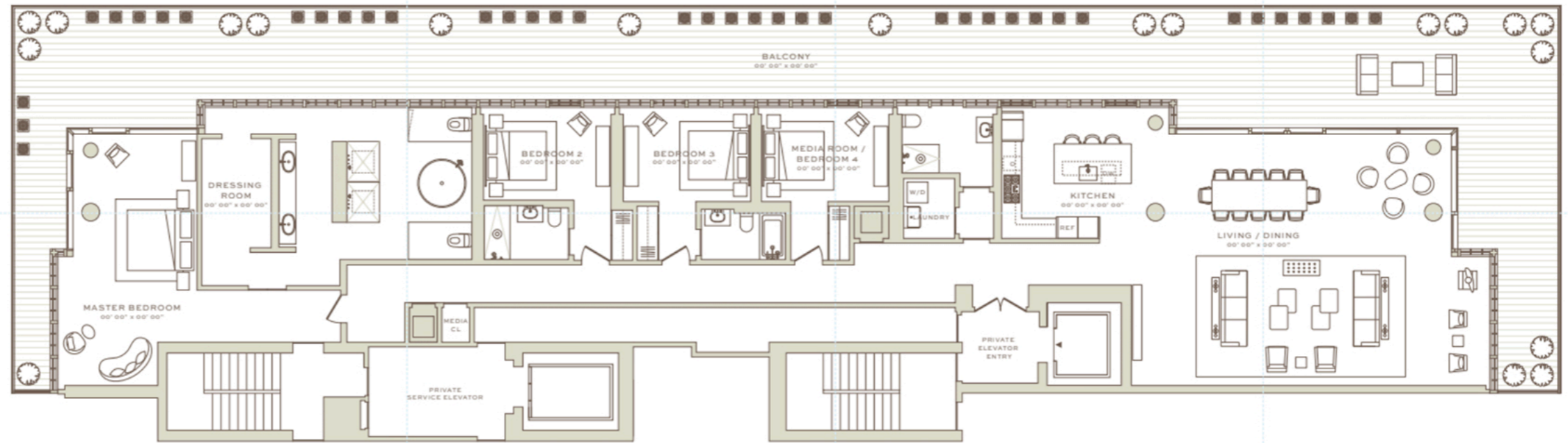
Direct beach access

24-hour doorman and concierge services

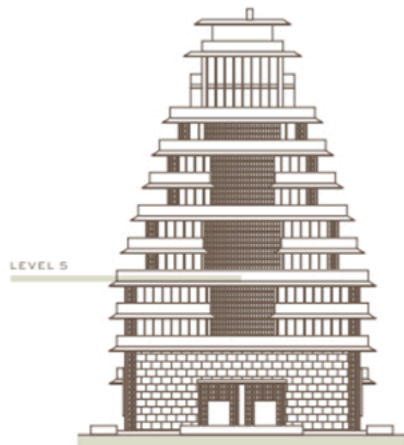
A private suite of opulent luxury resort-style spa amenities include:
indoor heated lap pool, outdoor swimming pool with cabanas and sunbeds,
tranquil meditation ponds, sauna, and steam room

Exclusive fitness and leisure amenities provide a club-like offering
with a private rooftop tennis court, a state-of-the-art fitness center with
a yoga and stretching studio, a residents' lounge with catering
kitchen and a children's playroom

Dedicated valet service in addition to secure self-parking



NEED INFO ABOUT THE PLACEMENTS OF ALL APPLIANCES



LEVEL 5



Stated square footages and dimensions are measured to the exterior boundaries of the exterior walls and the centerline of interior demising walls between units and in fact vary from the square footages and dimensions that would be determined by using the description and definition of the "Unit" set forth in the Declaration, which generally only includes the interior airspace between the perimeter walls and excludes all interior structural components and other common elements. The method of measurement used herein is generally found in sales materials and is provided to allow a prospective buyer to compare the Units with units in other condominium projects that utilize the same method. For your reference, the area of the Unit determined as set forth in the Declaration, is \times - XXXXXX sq. ft. for unit type XXXXXX. Terraces/balconies are not part of the Unit. Measurements of rooms reflected herein are generally taken at the furthest points of each given room (as described above and as if the room were a perfect rectangle), without regard for any cutouts or variations. Accordingly, the interior air space dimensions of the actual room will be smaller than the product obtained by multiplying the stated length and width. All square footages and dimensions, including (without limitation) estimated ceiling heights, are estimates based on preliminary plans and will vary with actual construction. All floor plans, specifications and other development plans are proposed and conceptual only, and are subject to change and will not necessarily accurately reflect the final plans and specifications. This advertisement is not an offering. It is a solicitation of interest in the advertised property. No offering of the advertised condominium units can be made, no deposits can be accepted, and no reservations, binding or non-binding, can be made until an offering plan is filed with the New York State Department of Law. This advertisement is made pursuant to Cooperative Policy Statement No. 1, issued by the New York State Department of Law. File No. CP18-0073. Sponsor: 5C 6955, LLC, 106 Catbird Ct., Summerville, SC, 29485.

COLLINS AVENUE



OCEAN

