



SOUTH BEACH

RESIDENCE AMENITIES

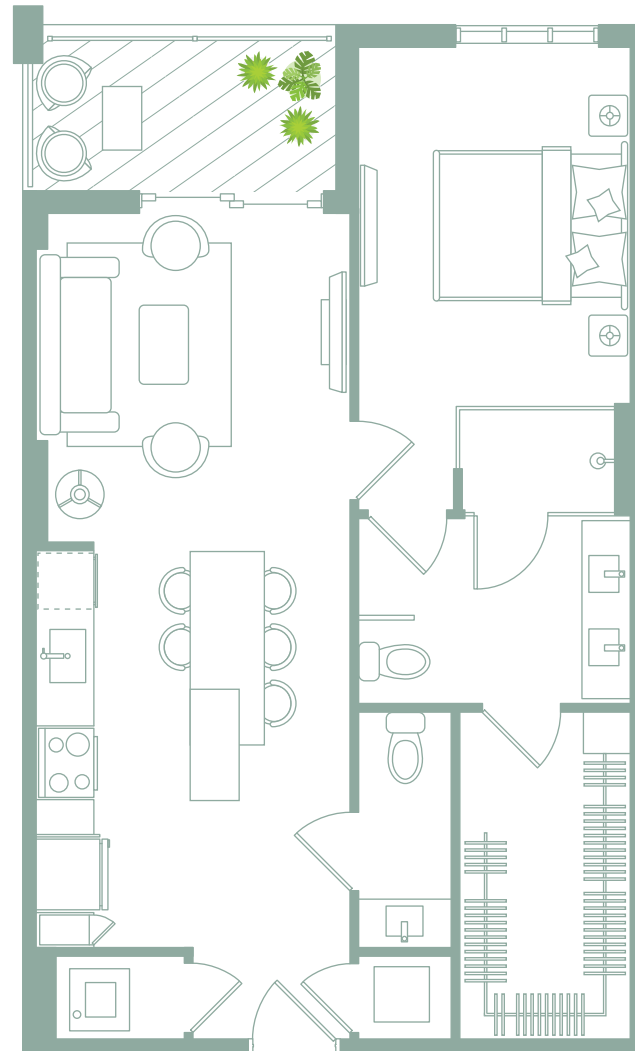
- Spacious floorplan
- 12 x 24 white porcelain CONCORD tiles
- Samsung smart WIFI enabled front load full size washer & dryers
- Private balcony
- Oversized walk-in master closet fully built out
- NEST digital programable thermostats
- Digital keyless entry
- Designer lighting fixtures

CHEF-CALIBER KITCHENS

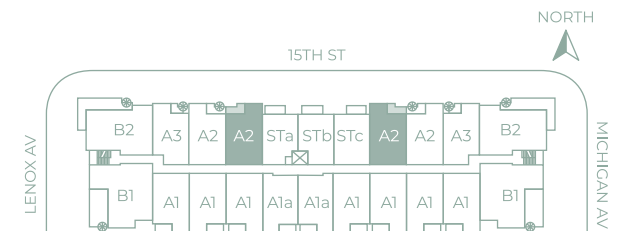
- White COMPAC quartz countertops
- Italian kitchen cabinetry
- USB charging station
- Full white quartz backsplash
- Pantry
- Multi-feature kitchen faucet
- Samsung **Family Hub** touch screen smart refrigerator
- Samsung smart WIFI enabled with Bluetooth connectivity high efficiency appliances
- Multi-feature kitchen faucet

SPA INSPIRED BATHS

- Contemporary bath hardware
- Italian vanity with cultured white marble countertop
- Front lit mirror
- Artistically designed full height porcelain wet walls in shower
- Open concept bathroom
- Frameless glass shower enclosure
- Rain shower and hand shower in master bath
- Powder room
- Double sink in master bath



UNIT A2 - NO TERRACE	LEVEL 2
1 BEDROOM / 1.5 BATH	
Gross a/c Area	751 Sq. Ft.
Balcony	70 Sq. Ft.
TOTAL	821 Sq. Ft.



Any renderings and depictions are conceptual only and are for the convenience of reference. They should not be relied upon as representations, express or implied, of the final detail of the Units nor the views from any of the Units.

ORAL REPRESENTATIONS CANNOT BE RELIED UPON AS CORRECTLY STATING REPRESENTATIONS OF THE DEVELOPER. FOR CORRECT REPRESENTATIONS, MAKE REFERENCE TO THIS BROCHURE AND TO THE DOCUMENTS REQUIRED BY 718.503, FLORIDA STATUTES, TO BE FURNISHED BY A DEVELOPER TO A BUYER OR LESSEE.