



QUADRO
MIAMI DESIGN DISTRICT

B11

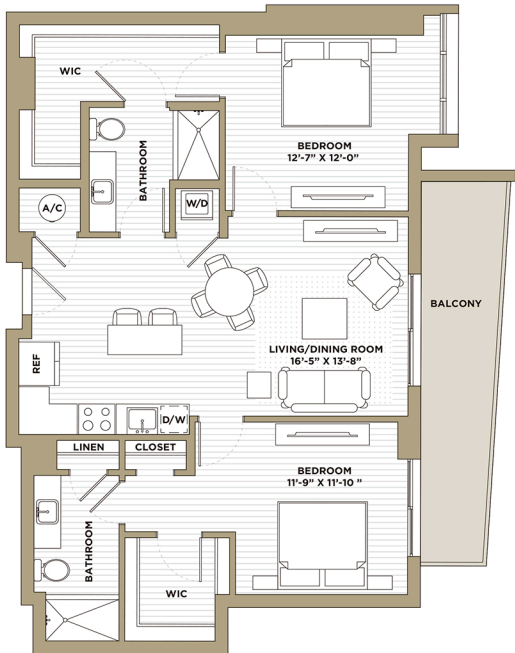
2 BEDROOM
2 BATHROOM

INTERIOR
1,199 SQ.FT.
FLOORS 3-4
SOUTH TOWER

Miami
Design District



Biscayne Blvd.



Floor plans are artist's rendering. All dimensions are approximate. Actual product and specifications may vary in dimension or detail. Balconies may vary based on layout and location. Not all features are available in every apartment. Prices and availability are subject to change. Please refer to an agent for details.