

FOLLOWING FLOORS:

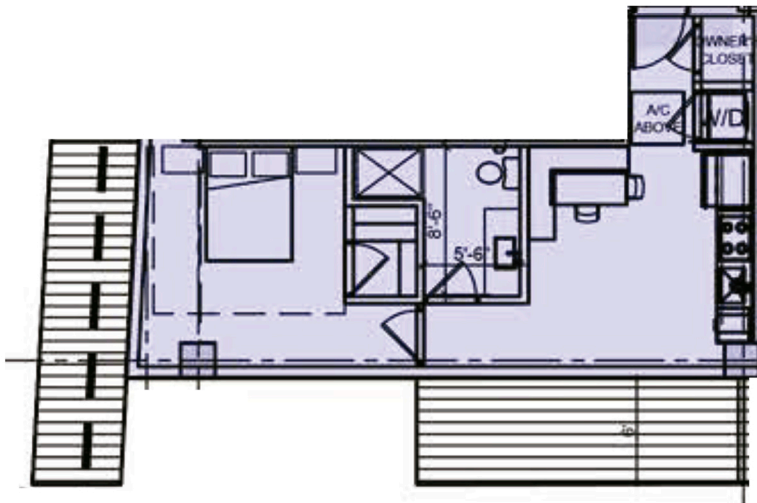
— SKIPPING 13th FLOOR

- 14th floor
- 15th floor
- 16th floor

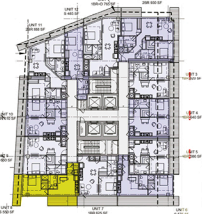
- 20th floor
- 21st floor
- 22nd floor

- 26th floor
- 27th floor
- 28th floor

- 32nd floor
- 33rd floor
- 34th floor



**UNIT 8  
STUDIO  
550 SF**



© All representations cannot be relied upon as correctly stating the representations of the developer. For correct representations, make reference to this brochure and to the documents required by Section 743.50, Florida Statutes, to be furnished by a developer to a buyer or lessee. Stated square footages are measured to the exterior boundaries of the exterior walls and the centerline of interior loading walls and in fact vary from the square footage and dimensions that would be determined by using the description and definition of the "unit" set forth in the declaration (which generally only includes the interior airspace between the perimeter walls and excludes all interior structural components and other common elements). This method is generally used in sales materials and is provided to allow a prospective buyer to compare the units with units in other condominium projects that utilize the same method. For your reference, the area of the unit, determined in accordance with these defined unit boundaries, is set forth above and is labeled as "interior". Measurements of rooms set forth on this floor plan are generally taken at the farthest points of each given room (as if the room were a perfect rectangle), without regard for any cutouts or variations accordingly. The area of the actual room will typically be smaller than the product obtained by multiplying the stated length and width. All dimensions are estimates (which will vary with actual construction) and all floor plans, specifications, location and sizes of windows and doors, and other development plans are subject to change and will not necessarily accurately reflect the final plans and specifications for the development. All depictions of appliances, counters, soffits, floor coverings and other matters of detail, including, without limitation, items of finish and decoration, are conceptual only and are not necessarily included in each unit.