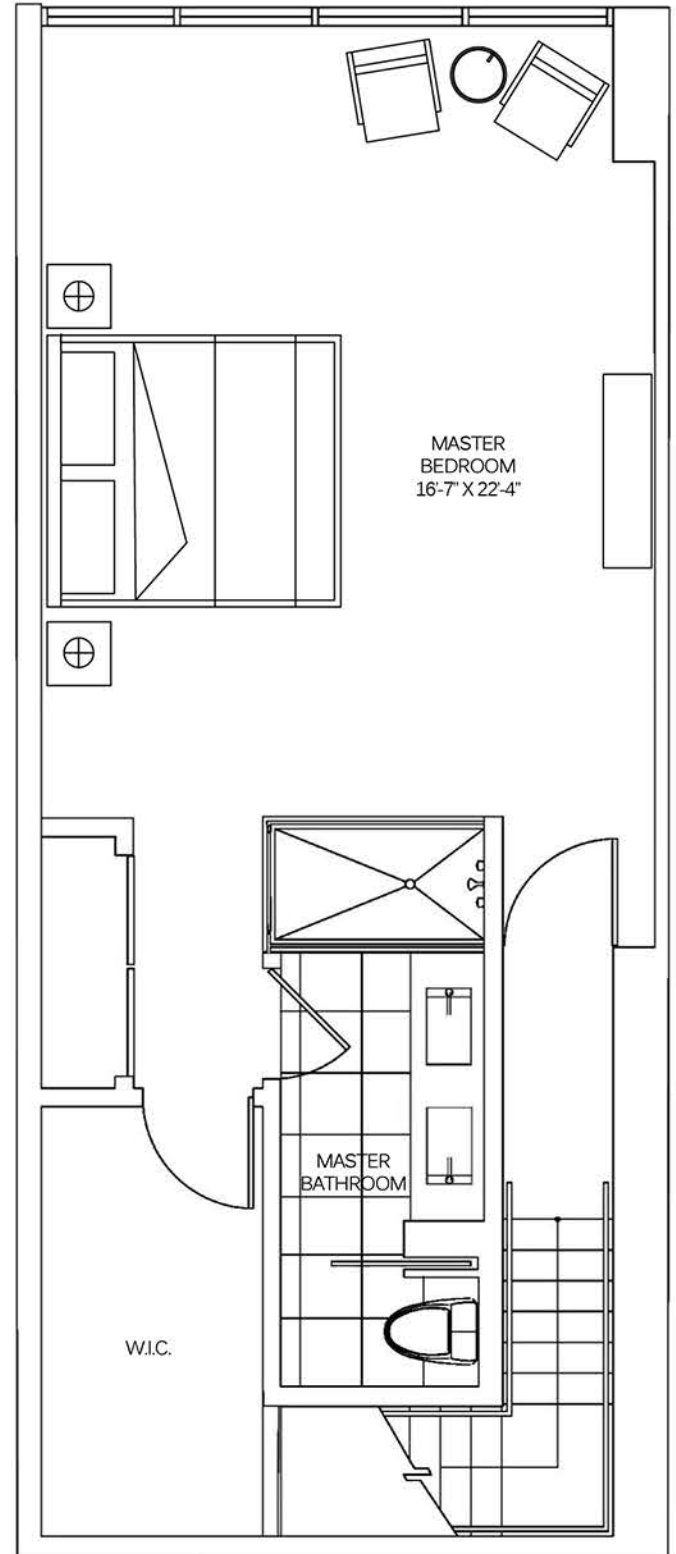


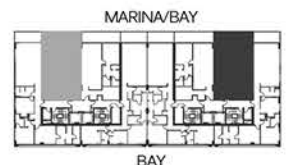
ENTRY LEVEL



LOWER LEVEL

400
SUNNY
ISLES

UNIT C
2 BEDROOMS / DEN / 3 BATHS
(3 BEDROOM CONVERTABLE)
1849 SF UNDER A/C + 226 SF TERRACE = 2075 SF TOTAL
1718 m² UNDER A/C + 21.0 m² TERRACE = 1928 m² TOTAL



All fixtures, furniture, items of finish, and decorations are for display purposes only and will not be included with the unit. Consult the prospectus for a description of the features which are to be included in the unit. Prices, features, and specifications are subject to change without notice. Oral representations cannot be relied upon as correctly stating the representations of the developer. For correct representations by the developer, make reference to documents required by Section 718.503 of the Florida Statutes, to be furnished by the developer to a buyer or lessee. The developer makes no representations or warranties regarding the actual size and dimensions of the units contained in this brochure, and no party may rely upon the same in determining whether to purchase a unit and the purchase price of the unit. The survey of the units and the provisions of the declaration of condominium shall control in determining the boundaries and actual dimensions of the units. Unit's square footage is measured using BOMA guidelines as described in the condominium documents. Pocket door will not be furnished by developer. Drawing is not to scale.