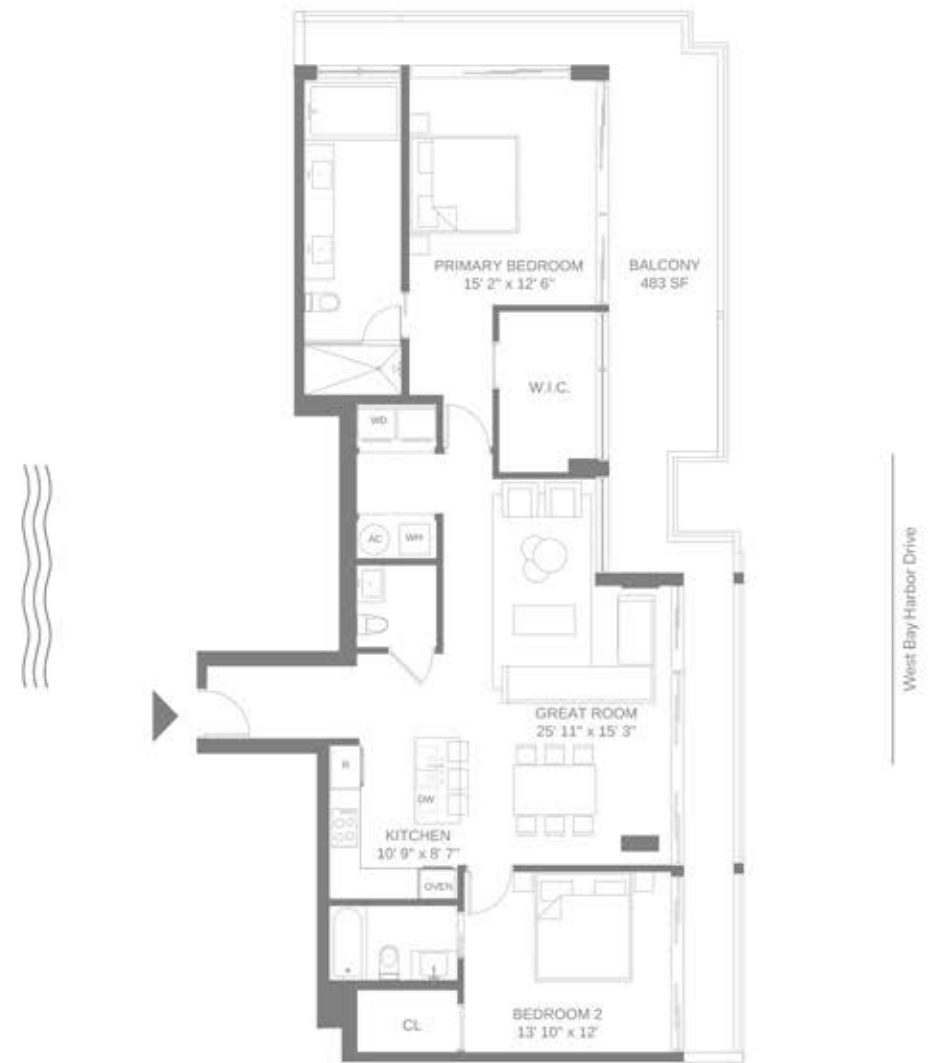


Residence 404

Floor 4

- 2 Bedrooms
- 2 Bathrooms
- Powder Room

Interior	1,480 SF / 137.5 M ²
Exterior	483 SF / 44.9 M ²
Total	1,963 SF / 182.4 M ²



The condominium is being developed by Horizon BH, LLC, a Florida limited liability company ("Developer"). Any and all statements, disclosures and/or representations shall be deemed made by Developer and you agree to look solely to Developer with respect to any and all matters relating to the marketing and/or development of the Condominium and with respect to the sales of units in the Condominium. Oral representations cannot be relied upon as correctly stating the representations of the developer. For correct representations, make reference to the brochure and to the documents required by Section 718.503, Florida Statutes, to be furnished by a developer to a buyer or lessee. These materials are not intended to be an offer to sell or solicitation to buy a unit in the condominium. Such an offering shall only be made pursuant to the prospectus (offering circular) for the condominium and no other materials shall be relied upon unless made in the prospectus or in the applicable purchase agreement. In no event shall any solicitation, offer or sale of a unit in the condominium be made in, or to residents of, any state or country in which such activity would be unlawful. FOR NEW YORK RESIDENTS, THE COMPLETE OFFERING TERMS ARE IN A CPS-D APPLICATION AVAILABLE FROM THE OFFEROR FILE NO. CPS-0065. Stated square footage and dimensions are measured to the exterior boundaries of the exterior walls and the vertical line of interior dividing walls and in fact vary from the square footage and dimensions that would be determined by using the description and definition of the "GWT" set forth in the Declaration (which generally only includes the interior airspace between the perimeter walls, and excludes all interior structural components and other common elements). This method is generally used in sales materials and is provided to allow a prospective buyer to compare the Units with units in other condominium projects that utilize the same method. Measurements of rooms set forth on this floor plan are generally taken at the farthest points of each given room (as if the room were a perfect rectangle), without regard for any cutouts or variations. Accordingly, the area of the actual room will typically be smaller than the product obtained by multiplying the stated length and width. All dimensions are estimates which will vary with actual construction, and all floor plans, specifications and other development plans are subject to change and will not necessarily accurately reflect the final plans and specifications for the development. The project graphics, renderings and text provided herein are copyrighted works owned by the Developer. All rights reserved. Unauthorized reproduction, display or other dissemination of such materials is strictly prohibited and constitute copyright infringement. No real estate broker is authorized to make any representations or other statements regarding the project, and no agreements with, deposits paid to or other arrangements made with any real estate broker are or shall be binding on the Developer.