



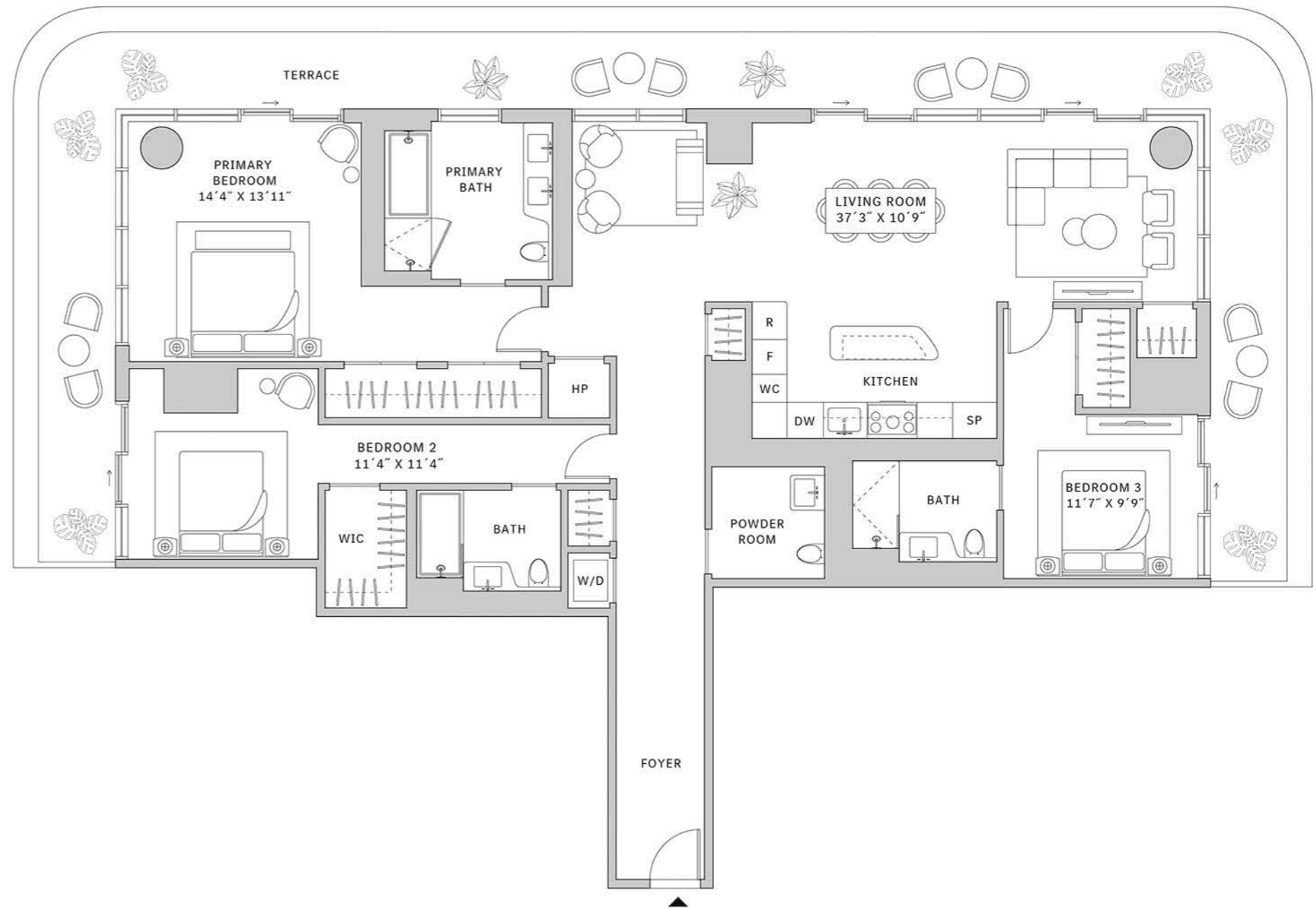
Residence 01

FLOOR 31-40

- ▲ North tower
- ▲ 3 Bedrooms
- ▲ 3 Bathrooms
- ▲ Powder Room
- ▲ Interior: 1958 sq ft
- ▲ Terrace: 710 sq ft

FEATURES

- ▲ Corner three-bedroom residence with panoramic North, West and East exposure overlooking Southside Park
- ▲ 10' floor-to ceiling windows and sliding glass doors with direct access to 5' deep wrap-around terrace



NORTH

