



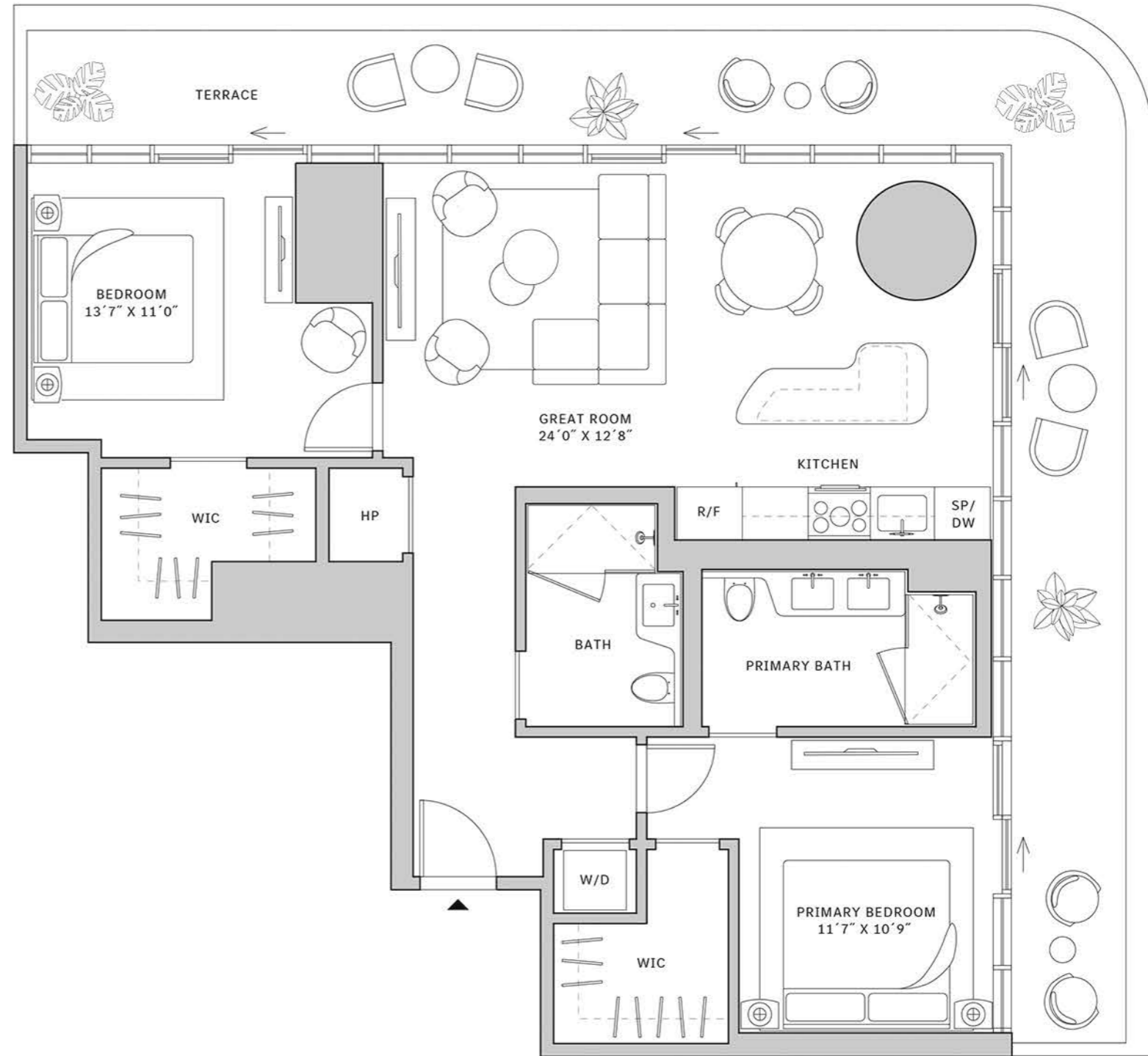
# Residence 09

FLOORS 32-40

- ▲ South Tower
- ▲ 2 Bedrooms
- ▲ 2 Bathrooms
- ▲ Interior: 1,081 sq ft
- ▲ Terrace: 434 sq ft

## FEATURES

- ▲ Corner two-bedroom residence with panoramic East to North exposure
- ▲ 10' floor-to-ceiling windows and sliding glass doors with direct access to 5' deep wrap-around terrace



NORTH

