



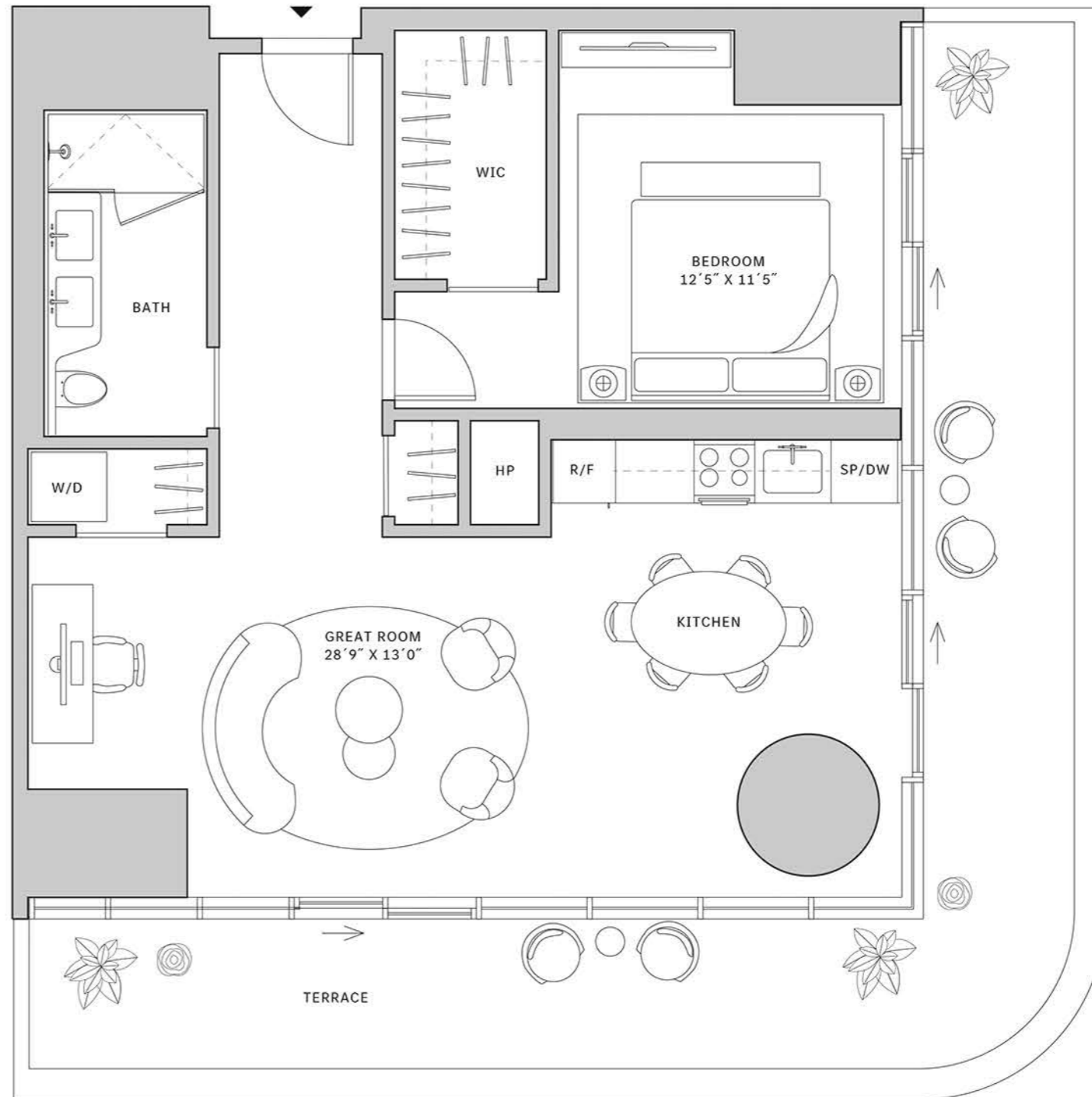
Residence 10

FLOORS 32-40

- ▲ South Tower
- ▲ 1 Bedroom
- ▲ 1 Bathroom
- ▲ Interior: 883 sq ft
- ▲ Terrace: 350 sq ft

FEATURES

- ▲ Corner one-bedroom residence with panoramic East to South exposure
- ▲ 10' floor-to-ceiling windows and sliding glass doors with direct access to 5' deep wrap-around terrace



NORTH

