



HOLLYWOOD MOON

Residence 308

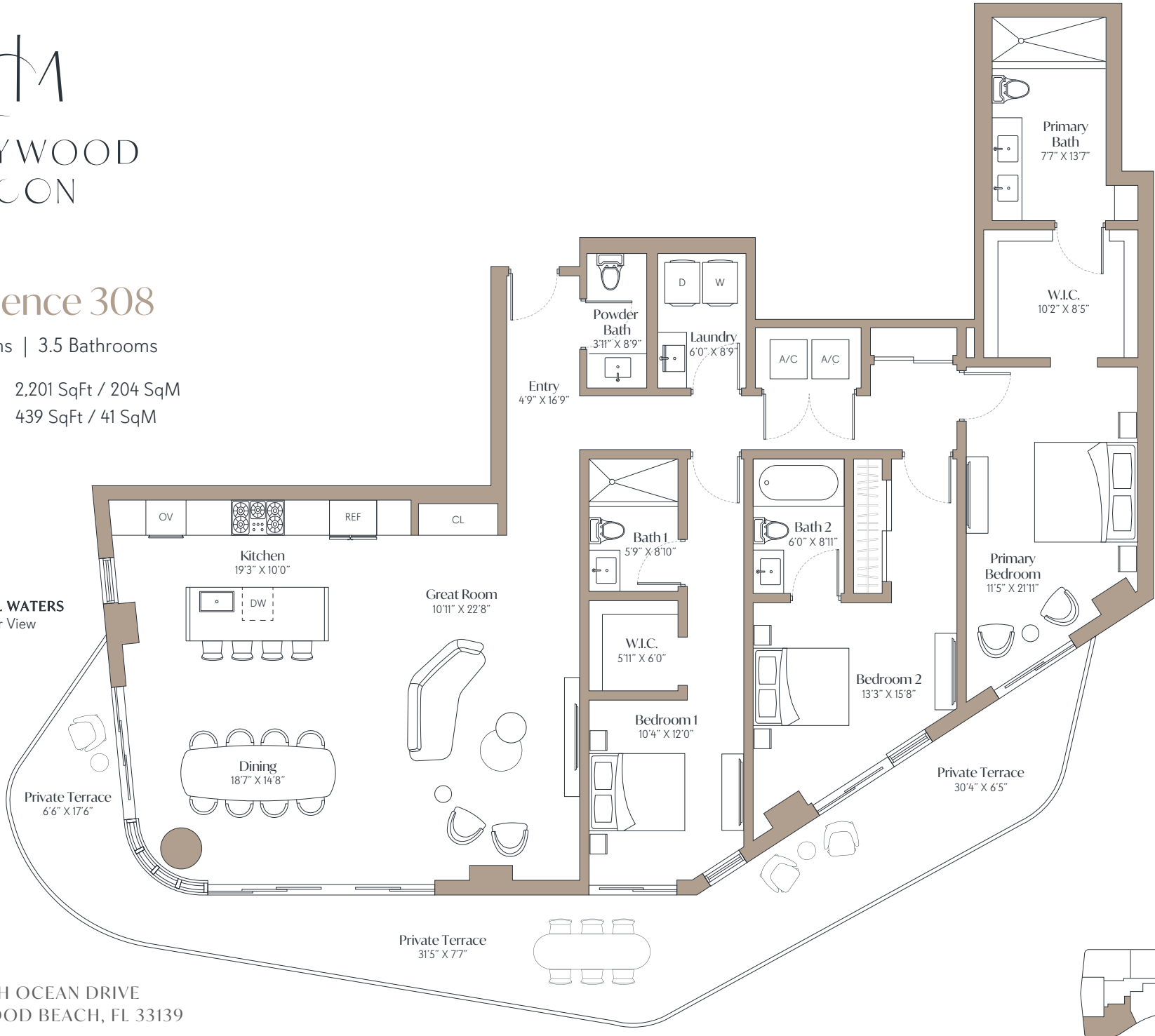
3 Bedrooms | 3.5 Bathrooms

INTERIOR 2,201 SqFt / 204 SqM

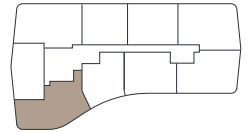
EXTERIOR 439 SqFt / 41 SqM

INTRACOASTAL WATERS
Golden Hour View

ATLANTIC OCEAN
Sunrise View



901 SOUTH OCEAN DRIVE
HOLLYWOOD BEACH, FL 33139



ORAL REPRESENTATIONS CANNOT BE RELIED UPON AS CORRECTLY STATING REPRESENTATIONS OF THE DEVELOPER. FOR CORRECT REPRESENTATIONS, MAKE REFERENCE TO THIS BROCHURE AND TO THE DOCUMENTS REQUIRED BY § 718.503, FLORIDA STATUTES, TO BE FURNISHED BY A DEVELOPER TO A BUYER OR LESSEE.

Neither Hollywood Moon LLC nor any of its affiliates or related persons makes any representation, warranty, or guarantee, expressed or implied, in respect of any statement or information made or contained in these materials. Neither Hollywood Moon LLC nor any of its directors, officers, employees, or agents has or will have any responsibility or liability arising out of, or related to, these materials or the transactions contemplated by these materials, including any liability or responsibility for any statement or information made or contained in or the use of these materials. The square footages of units set forth in this brochure and/or these marketing materials, and/or the methodology used to calculate such square footages, may differ from the square footages of units set forth in the other documents required by § 718.503, Florida Statutes, to be furnished by a developer to a buyer or lessee, and/or the methodology used to calculate such square footages.